



388 WASHINGTON RD.
SAYREVILLE, NEW JERSEY

2,141 SF FOR LEASE

JOSEPH LANE

jlane@jefferyrealty.com

C: 908.334.5598

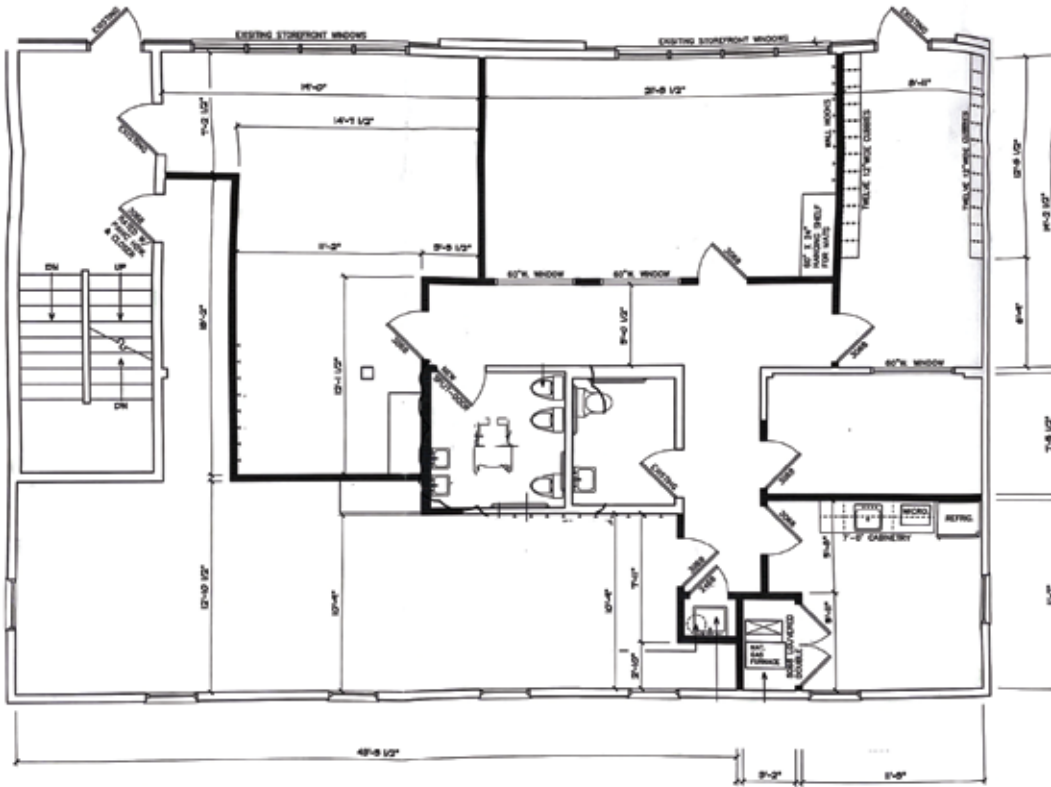
O: 908.668.9600



JEFFERY REALTY
Retail Specialist

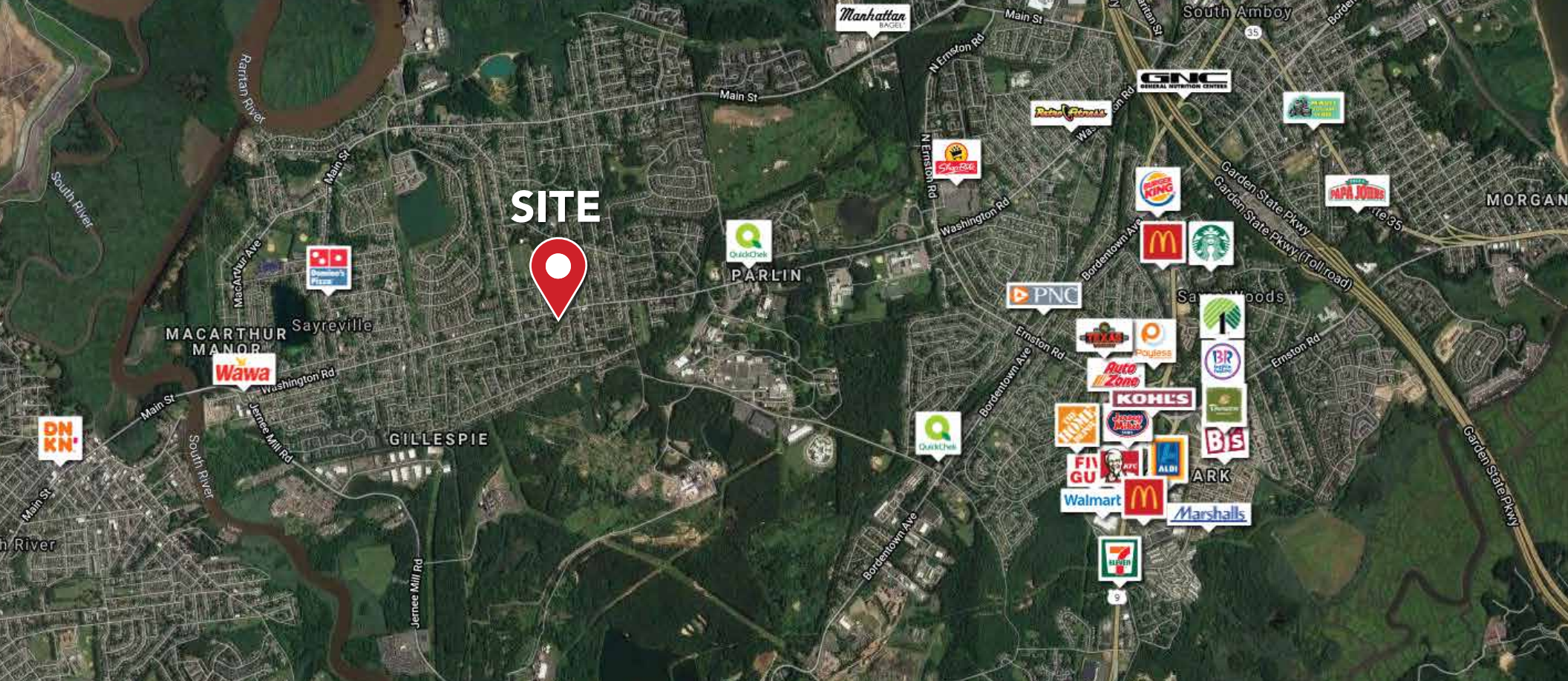
116 Route 22 • North Plainfield, NJ 07060 • T: 908.668.9600 • F: 908.668.5225 • www.JefferyRealty.com
All information is from sources deemed reliable and is submitted subject to errors, omissions, change of price, terms, prior sales and withdrawals.





- AVAILABLE:** 2,141SF
- RENT:** CALL FOR QUOTE
- NNN:** CALL FOR QUOTE
- PARKING:** 20 SPACES FRONT
68 SPACES SHARED
- TRAFFIC:** 16,389 VPD
- NOTES:** FORMER DAYCARE
ALL USES CONSIDERED





388 WASHINGTON RD. SAYREVILLE, NEW JERSEY

NEIGHBORING RETAILERS



 DEMOGRAPHICS	1 MILE	3 MILE	5 MILE
Total Population	12,506	64,603	204,927
Average HHI	\$112,782	\$110,595	\$115,790
Households	4,556	23,718	75,329